



Curtis Mill Lane, Stapleford Abbotts, RM4

BUTLER  STAG



A detached timber framed bungalow, set in a peaceful setting backing open countryside.



Freehold

- Sold by Butler and Stag
- Two Double Bedrooms
- Off Street Parking For Three Cars
- Detached Bungalow
- Backing Open Countryside
- Open Plan Lounge/Kitchen
- Freehold

Spanning 840 sq ft/ 78 sq metres the property is generously proportioned two bedroom bungalow comprising of a large open plan lounge/kitchen area with a feature fire place, lean-to offering dinning/utility space and separate family bathroom room. Externally, there is allocated parking for three cars.

Curtis Mill Lane is located within close proximity of the village shop and the renowned Top Oak Pub. Theydon Bois village is a short drive for access to the central line into London. The village has a convenience store two pubs, primary school along with two golf courses and is just 15 minutes' drive from Epping, Ongar, Brentwood and Romford. The Central Line underground station at Chigwell is about 10 minutes away and from there it is a simple journey into London. There is also good access to the A12 and the M25.

Offered chain free.

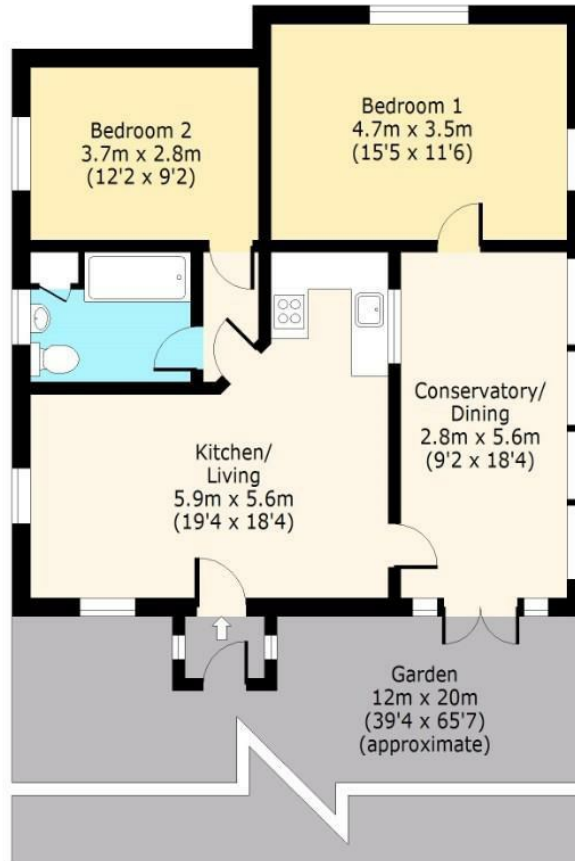




Curtis Mill Lane

Ground Floor

Approx. 78 Sq. meters (840 Sq. feet)



Total area: approx. 78 Sq. meters (840 Sq. feet)
For illustration purposes only - not to scale
www.lpaplus.com

IMPORTANT NOTICE - These particulars have been prepared in good faith and they are not intended to constitute part of an offer or contract. We have not performed a structural survey on this property and the services, appliances and specific fittings have not been tested. All photographs, measurements, floor plans and distances referred to are given as a guide and should not be relied upon.

BUTLER & STAG

☎ 01992 667666

🏠 4 Forest Drive, Theydon Bois, Essex, CM16 7EY

✉ theydon@butlerandstag.com

www.butlerandstag.uk